

5.5097 AC. REMAINDER PARCEL

North: 4653.4670' East: 4635.8342'

Segment #1 : Line
Course: N1° 37' 37"E Length: 526.15'
North: 5179.4049' East: 4650.7725'

Segment #2 : Line
Course: S89° 45' 10"E Length: 90.00'
North: 5179.0166' East: 4740.7717'

Segment #3 : Line
Course: S0° 14' 52"W Length: 194.00'
North: 4985.0184' East: 4739.9327'

Segment #4 : Line
Course: S89° 45' 10"E Length: 260.00'
North: 4983.8966' East: 4999.9303'

Segment #5 : Line
Course: N0° 14' 52"E Length: 16.10'
North: 4999.9964' East: 4999.9999'

Segment #6 : Line
Course: S89° 59' 35"E Length: 42.25'
North: 4999.9913' East: 5042.2499'

Segment #7 : Line
Course: N0° 00' 25"E Length: 177.72'
North: 5177.7113' East: 5042.2715'

Segment #8 : Line
Course: S89° 45' 10"E Length: 168.50'
North: 5176.9842' East: 5210.7699'

Segment #9 : Line
Course: S0° 14' 52"W Length: 526.00'
North: 4650.9891' East: 5208.4952'

Segment #10 : Line
Course: N89° 45' 10"W Length: 572.66'
North: 4653.4601' East: 4635.8405'

Perimeter: 2573.39' Area: 240004.18 Sq. Ft.
Error Closure: 0.0094 Course: S42° 14' 46"E
Error North: -0.00695 East: 0.00632
Precision 1: 273763.83

0.9870 AC. REMAINDER PARCEL

North: 5178.9383' East: 4759.5108'

Segment #1 : Line
Course: S89° 45' 10"E Length: 241.26'
North: 5177.8973' East: 5000.7686'

Segment #2 : Line
Course: S0° 14' 52"W Length: 177.90'
North: 4999.9990' East: 4999.9993'

Segment #3 : Line
Course: N89° 59' 35"W Length: 240.70'
North: 5000.0281' East: 4759.2993'

Segment #4 : Line
Course: N0° 04' 02"E Length: 178.91'
North: 5178.9380' East: 4759.5092'

Perimeter: 838.77' Area: 42991.63 Sq. Ft.
Error Closure: 0.0017 Course: S80° 26' 22"W
Error North: -0.00028 East: -0.00167
Precision 1: 493394.12

0.1709 AC. SPLIT PARCEL

North: 5177.8973' East: 5000.7693'

Segment #1 : Line
Course: S89° 45' 10"E Length: 41.50'
North: 5177.7182' East: 5042.2689'

Segment #2 : Line
Course: S0° 00' 25"W Length: 177.72'
North: 4999.9982' East: 5042.2474'

Segment #3 : Line
Course: N89° 59' 35"W Length: 42.25'
North: 5000.0033' East: 4999.9974'

Segment #4 : Line
Course: N0° 14' 52"E Length: 177.90'
North: 5177.9017' East: 5000.7667'

Perimeter: 439.38' Area: 7446.40 Sq. Ft.
Error Closure: 0.0051 Course: N30° 33' 13"W
Error North: 0.00439 East: -0.00259
Precision 1: 86150.98

0.1710 AC. SPLIT PARCEL

North: 5179.0191' East: 4740.7717'

Segment #1 : Line
Course: S89° 45' 10"E Length: 18.74'
North: 5178.9383' East: 4759.5116'

Segment #2 : Line
Course: S0° 04' 02"W Length: 178.91'
North: 5000.0284' East: 4759.3017'

Segment #3 : Line
Course: S89° 59' 35"E Length: 240.70'
North: 4999.9992' East: 5000.0017'

Segment #4 : Line
Course: S0° 14' 52"W Length: 16.10'
North: 4983.8994' East: 4999.9320'

Segment #5 : Line
Course: N89° 45' 10"W Length: 260.00'
North: 4985.0212' East: 4739.9345'

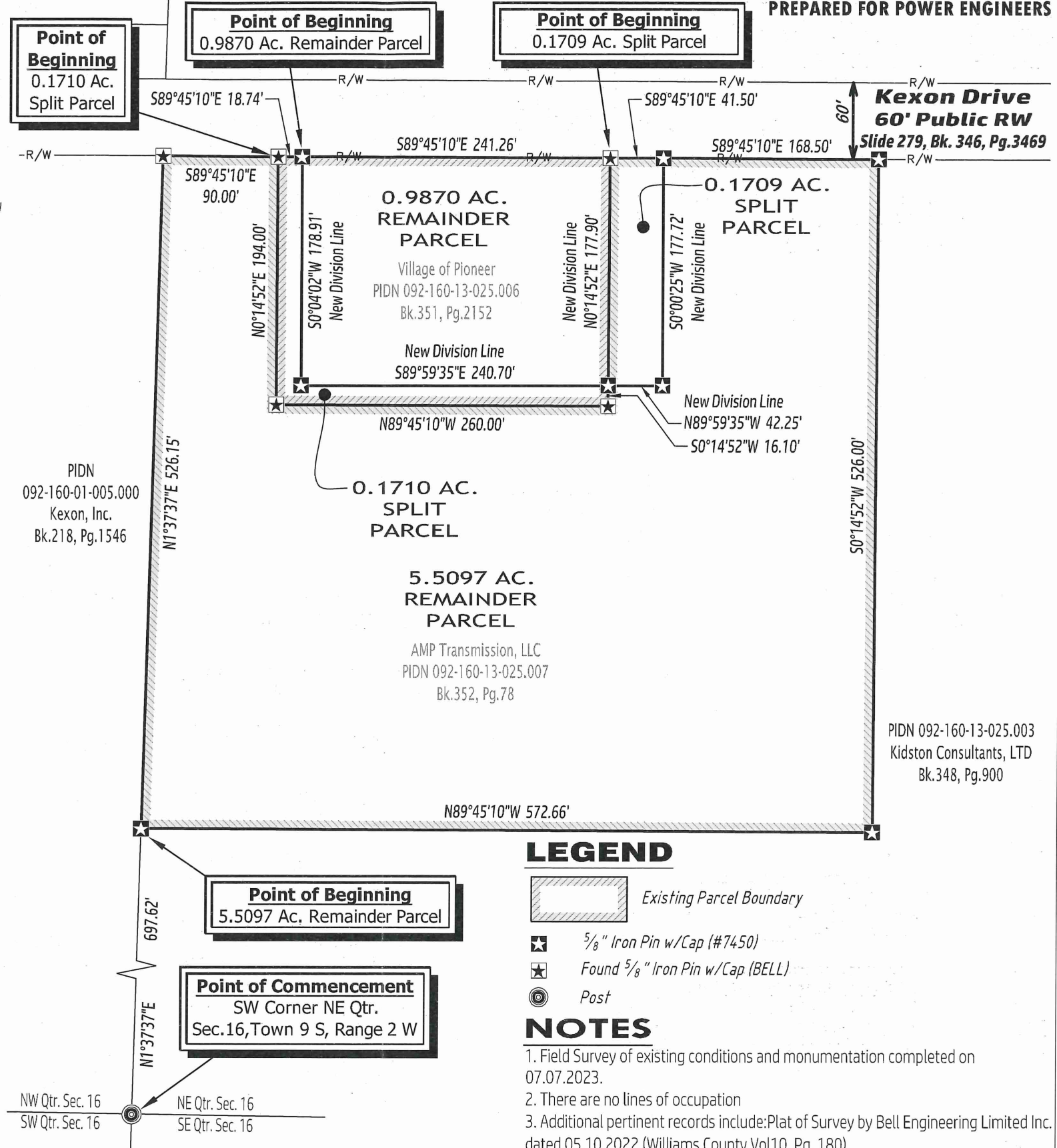
Segment #6 : Line
Course: N0° 14' 52"E Length: 194.00'
North: 5179.0194' East: 4740.7734'

Perimeter: 908.45' Area: 7448.37 Sq. Ft.
Error Closure: 0.0017 Course: N80° 26' 22"E
Error North: 0.00028 East: 0.00167
Precision 1: 534382.35

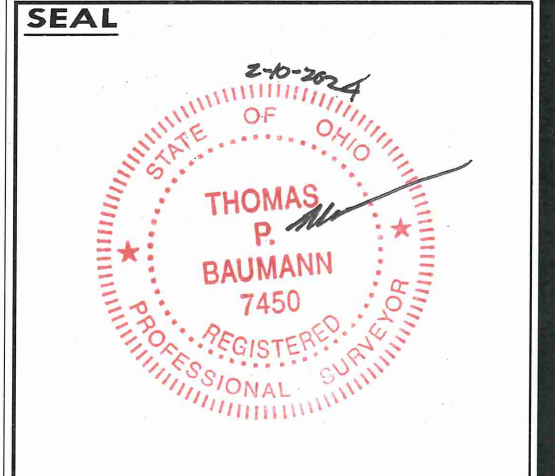
~PLAT OF SURVEY~

**A LOT SPLIT OF PARCELS 092-160-13-025.006 AND .007
LOCATED IN THE NORTHEAST QUARTER OF SECTION 16
TOWNSHIP 9 SOUTH, RANGE 2 WEST, MICHIGAN MERIDIAN
MADISON TOWNSHIP, VILLAGE OF PIONEER, WILLIAMS COUNTY, OHIO**

PREPARED FOR POWER ENGINEERS



BAUMANN LAND SURVEY, INC.
P.O. BOX 14834, CINCINNATI, OHIO 45250
513.860.3999 WWW.BAUMANNLSI.COM



OHIO CERTIFICATION
I hereby state that this plat shown hereon is the correct representation of a field survey supervised by me and meets the current "Ohio minimum standards for property surveys."

Thomas P. Baumann, PS Date
Ohio Surveyor #: S-7450

PIDN 092-160-01-005.000
Kexon, Inc.
Bk.218, Pg.1546

PIDN 092-160-13-025.006
Village of Pioneer
PIDN 092-160-13-025.006
Bk.351, Pg.2152

PIDN 092-160-13-025.007
AMP Transmission, LLC
PIDN 092-160-13-025.007
Bk.352, Pg.78

PIDN 092-160-13-025.003
Kidston Consultants, LTD
Bk.348, Pg.900

SCALE
1" = 100'

NORTH

Based on the west line of the NE Qtr. of Section 16 being N01°37'37"E as shown on a survey Bell Engineering recorded with Williams County - Vol. 10V, Page 180

DRAWING: 14755
PROJECT: 22723
DATE: 01.15.2024
REVISION: 14765-02.10.2024

SHEET
1/1

I, Thomas P. Baumann, Registered Professional Surveyor No. S-7450, State of Ohio, do hereby certify that this plat is a true and correct representation of the field survey conducted by me or under my direct supervision and that I am a duly licensed and qualified professional surveyor in the State of Ohio.